

## Model 750 1-Hose Wash Water Recycling System



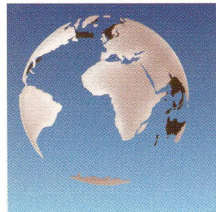
The **Model 750** is a 1-Hose wash water recycle system designed to handle the equipment wash operation of a typical 9-hole, or small 18-hole golf course. For optimal performance, the Model 750 is designed to be used in conjunction with ESD Waste2Water's pre-engineered Clipping Separation System and in-ground sumps. The Model 750 can readily be modified to accommodate remote hose stations, and can be customized to easily update existing wash areas. The system is versatile, requires low maintenance and is extremely effective at recycling wash water from turf care facility wash areas.

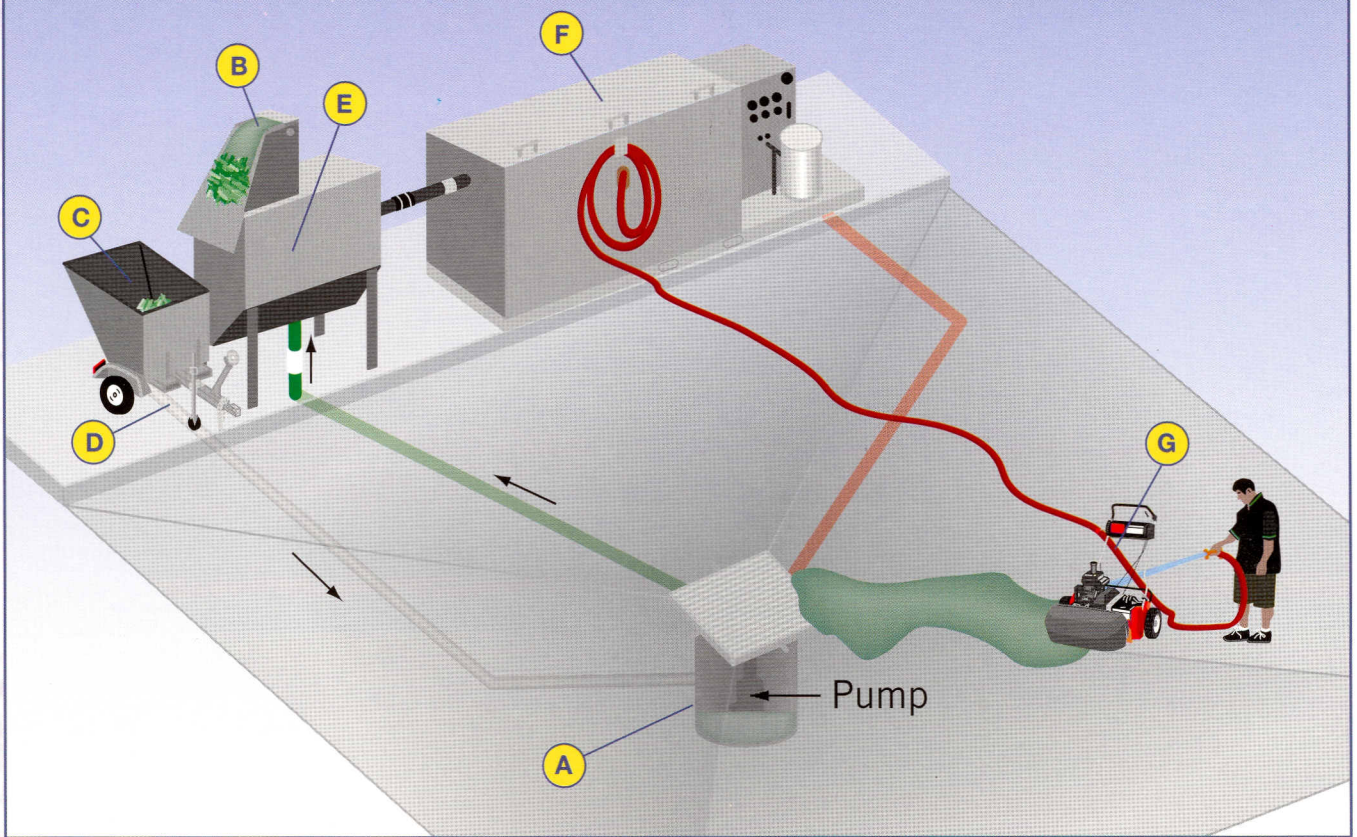
### Model 750 Specifications:

<b>Flow Range:</b>	0-15 GPM
<b>Daily Throughput:</b>	1,250 GPD
<b>Electrical:</b>	230 Volt 1 Phase 40 amp
<b>Fresh Water Supply:</b>	3/4" line required
<b>Operating Capacity:</b>	598 gallons
<b>Biological Media:</b>	1,152 sq ft
<b>Pressure Pump: (Centrifugal)</b>	3/4 hp
<b>Regenerative Blower:</b>	1.5 hp
<b>Dimensions: (L x W x H)</b>	7' x 4' x 4'3"
<b>Net Weight:</b>	450 lbs

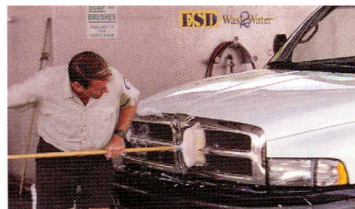


Certified to UL-508A Standards



**System Wash Water Flow Diagram and Description**

- A Round Sump**  
Wash water flows into a pre-engineered ESD Round Sump. Water, grass clippings and sand are swooshed around into a slurry. A powerful pump then pushes the slurry to the Clipping Separator.
- B Clipping Separator**  
The wash water slurry flows over the fine mesh clipping screen where grass and other solids slide down the clipping screen and into the Clipping Cart. At the same time, water drops through the clipping screen and into the Solids Separator.
- C Clipping Cart**  
The clipping cart captures grass clippings, sand particulates and other solids. The solids are dewatered as they drip-dry in the Clipping Cart. The water drains into a Shallow Sump below the Clipping Cart. Once dewatered, the grass clippings are removed and disposed of appropriately.
- D Shallow Sump**  
Below the Clipping Cart a Shallow Sump collects excess water where it is drained back to the Round Sump.
- E Solids Separator**  
Wash water from the Clipping Separator flows through a series of baffles and then gravity-feeds into the Biological Treatment System. Fine solids settle, and are drained on a regular basis, through valves in the bottom of the Solids Separator. The solids are then deposited into the Clipping Cart for disposal.
- F Biological Treatment System**  
Once in the Biological Treatment System, the water travels over and under a series of baffles and through a mass of honeycomb biomedica covered with specially-formulated microbes. Organic contaminants are consumed by the microbes, and the contaminants are converted into carbon dioxide and water.
- G Recycled Wash Water**  
Treated water is delivered, with a powerful pump, to the wash hoses and nozzles provided by ESD. The equipment is then washed with forceful streams of recycled wash water.



495 Oak Road  
Ocala, Florida 34472  
Tel: 800.277.3279 • Fax: 352-680-9278  
[www.waste2water.com](http://www.waste2water.com)



## Model 1500 2-Hose Wash Water Recycling System



The **Model 1500** is a 2-Hose wash water recycle system designed to handle the equipment wash operation of a typical 18-hole, or a small 27-hole golf course. For optimal performance, the Model 1500 is designed to be used in conjunction with ESD Waste2Water's pre-engineered Clipping Separation System and in-ground sumps. The Model 1500 can readily be modified to accommodate remote hose stations, and can be customized to easily update existing wash areas. The system is versatile, requires low maintenance and is extremely effective at recycling wash water from turf care facility wash areas.

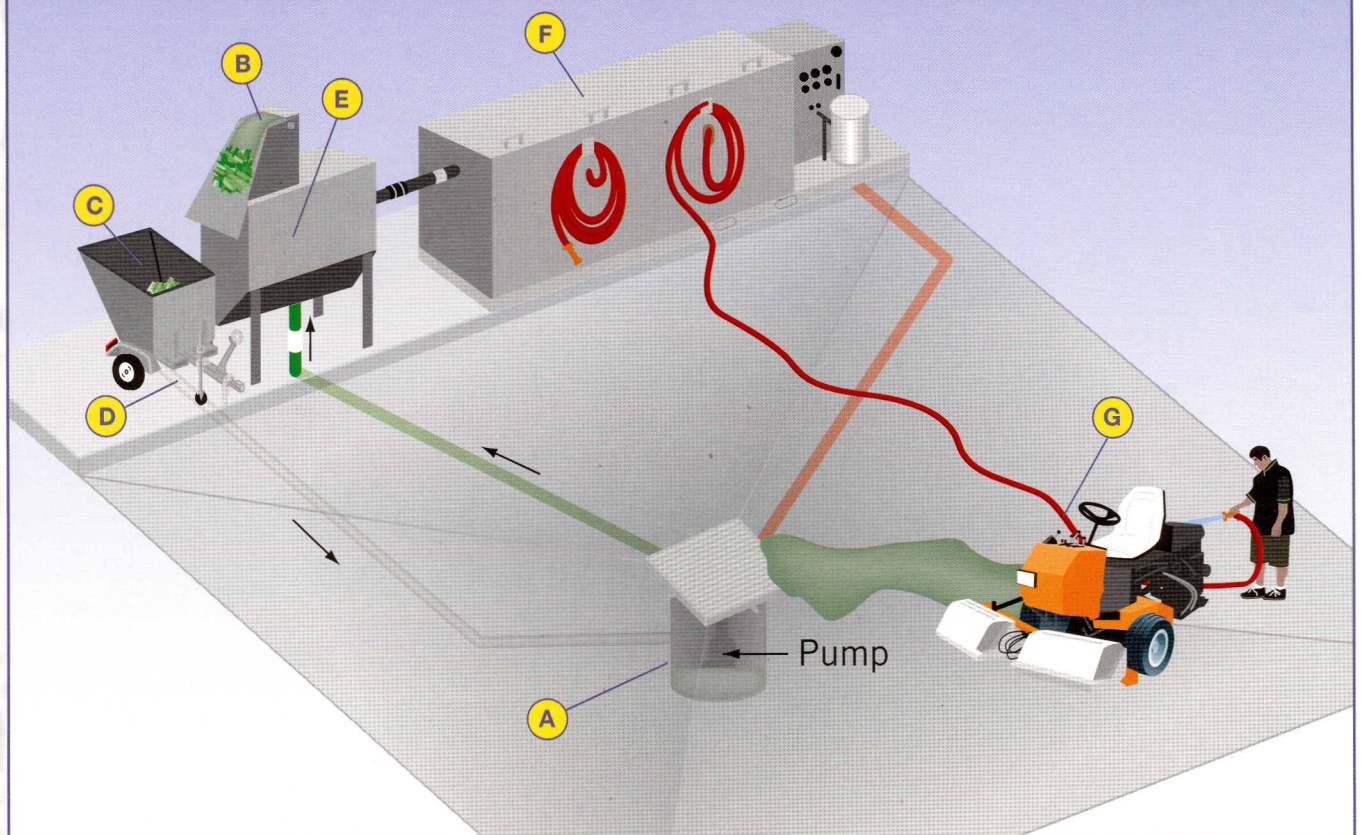
### Model 1500 Specifications:

<b>Flow Range:</b>	0-15 GPM
<b>Daily Throughput:</b>	2,510 GPD
<b>Electrical:</b>	230 Volt 1 Phase 40 amp
<b>Fresh Water Supply:</b>	3/4" line required
<b>Operating Capacity:</b>	860 gallons
<b>Biological Media:</b>	2,304 sq ft
<b>Pressure Pump: (Centrifugal)</b>	1 hp
<b>Regenerative Blower:</b>	1.5 hp
<b>Dimensions: (L x W x H)</b>	11' x 4' x 4'3"
<b>Net Weight:</b>	750 lbs



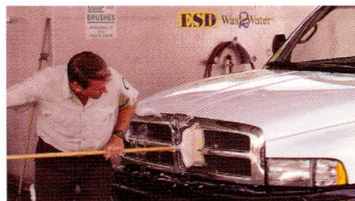
Certified to UL-508A Standards



**System Wash Water Flow Diagram and Description**

- A Round Sump**  
Wash water flows into a pre-engineered ESD Round Sump. Water, grass clippings and sand are swooshed around into a slurry. A powerful pump then pushes the slurry to the Clipping Separator.
- B Clipping Separator**  
The wash water slurry flows over the fine mesh clipping screen where grass and other solids slide down the clipping screen and into the Clipping Cart. At the same time, water drops through the clipping screen and into the Solids Separator.
- C Clipping Cart**  
The clipping cart captures grass clippings, sand particulates and other solids. The solids are dewatered as they drip-dry in the Clipping Cart. The water drains into a Shallow Sump below the Clipping Cart. Once dewatered, the grass clippings are removed and disposed of appropriately.
- D Shallow Sump**  
Below the Clipping Cart a Shallow Sump collects excess water where it is drained back to the Round Sump.

- E Solids Separator**  
Wash water from the Clipping Separator flows through a series of baffles and then gravity-feeds into the Biological Treatment System. Fine solids settle, and are drained on a regular basis, through valves in the bottom of the Solids Separator. The solids are then deposited into the Clipping Cart for disposal.
- F Biological Treatment System**  
Once in the Biological Treatment System, the water travels over and under a series of baffles and through a mass of honeycomb biomedica covered with specially-formulated microbes. Organic contaminants are consumed by the microbes, and the contaminants are converted into carbon dioxide and water.
- G Recycled Wash Water**  
Treated water is delivered, with a powerful pump, to the wash hoses and nozzles provided by ESD. The equipment is then washed with forceful streams of recycled wash water.



495 Oak Road  
Ocala, Florida 34472  
Tel: 800.277.3279 • Fax: 352-680-9278  
[www.waste2water.com](http://www.waste2water.com)



## Model 5000 4-Hose Wash Water Recycling System



The **Model 5000** is a 4-Hose wash water recycle system designed to handle the equipment wash operation of a typical 36-hole golf course. For optimal performance, the Model 5000 is designed to be used in conjunction with ESD Waste2Water's pre-engineered Clipping Separation System and in-ground sumps. The Model 5000 can readily be modified to accommodate remote hose stations, and can be customized to easily update existing wash areas. The system is versatile, requires low maintenance and is extremely effective at recycling wash water from turf care facility wash operations.

For golf courses that are larger than 36 holes, ESD can design and manufacture larger systems to meet the specific needs of the turf care facility.

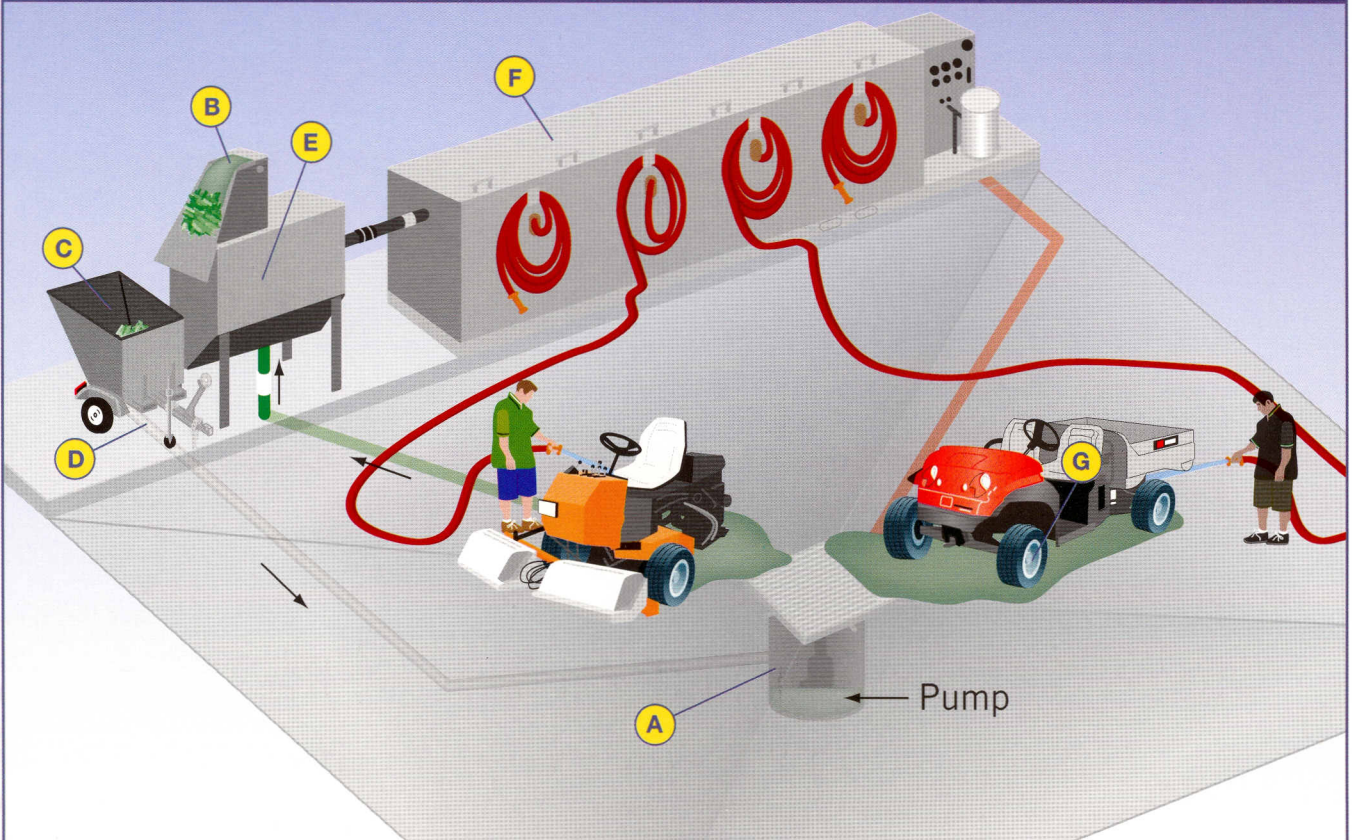


Certified to UL-508A Standards

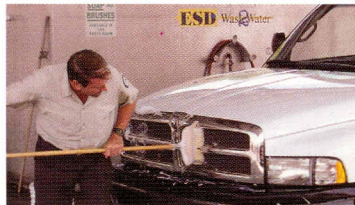
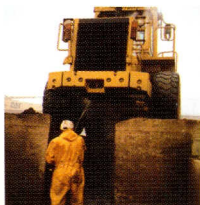
### Model 5000 Specifications:

<b>Flow Range:</b>	0-50 GPM
<b>Daily Throughput:</b>	6,050 GPD
<b>Electrical:</b>	230 Volt 1 Phase 60 amp
<b>Fresh Water Supply:</b>	3/4" line required
<b>Operating Capacity:</b>	2,020 gallons
<b>Biological Media:</b>	4,320 sq ft
<b>Pressure Pump: (Centrifugal)</b>	(2) 1 hp
<b>Regenerative Blower:</b>	(2) 1-1/2 hp
<b>Dimensions: (L x W x H)</b>	16' x 5' x 5'3"
<b>Net Weight:</b>	1,700 lbs



**System Wash Water Flow Diagram and Description**

- A Round Sump**  
Wash water flows into a pre-engineered ESD Round Sump. Water, grass clippings and sand are swooshed around into a slurry. A powerful pump then pushes the slurry to the Clipping Separator.
- B Clipping Separator**  
The wash water slurry flows over the fine mesh clipping screen where grass and other solids slide down the clipping screen and into the Clipping Cart. At the same time, water drops through the clipping screen and into the Solids Separator.
- C Clipping Cart**  
The clipping cart captures grass clippings, sand particulates and other solids. The solids are dewatered as they drip-dry in the Clipping Cart. The water drains into a Shallow Sump below the Clipping Cart. Once dewatered, the grass clippings are removed and disposed of appropriately.
- D Shallow Sump**  
Below the Clipping Cart a Shallow Sump collects excess water where it is drained back to the Round Sump.
- E Solids Separator**  
Wash water from the Clipping Separator flows through a series of baffles and then gravity-feeds into the Biological Treatment System. Fine solids settle, and are drained on a regular basis, through valves in the bottom of the Solids Separator. The solids are then deposited into the Clipping Cart for disposal.
- F Biological Treatment System**  
Once in the Biological Treatment System, the water travels over and under a series of baffles and through a mass of honeycomb biomedica covered with specially-formulated microbes. Organic contaminants are consumed by the microbes, and the contaminants are converted into carbon dioxide and water.
- G Recycled Wash Water**  
Treated water is delivered, with a powerful pump, to the wash hoses and nozzles provided by ESD. The equipment is then washed with forceful streams of recycled wash water.



495 Oak Road  
Ocala, Florida 34472  
Tel: 800.277.3279 • Fax: 352-680-9278  
[www.waste2water.com](http://www.waste2water.com)

